

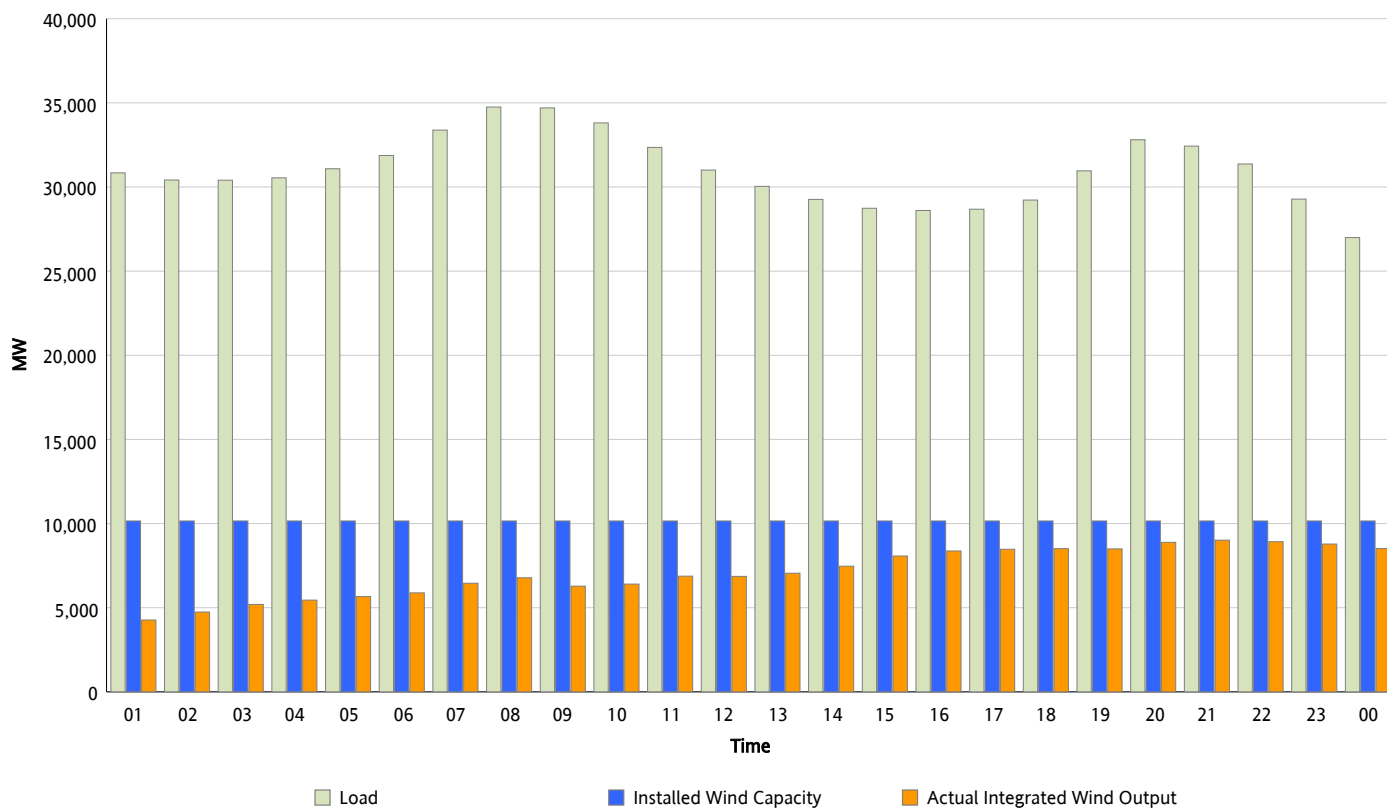


## ERCOT Grid Operations

### Wind Integration Report : 03/03/2013

Peak Load	34,751 MW
Load Peak Hour (HE)	08
Wind Over Peak	6,781 MW
Wind Record 02/09/13	9,481 MW
Max Wind Value*	9,089 MW
Wind Peak Time	20:45
Wind Integration %	28.12 %

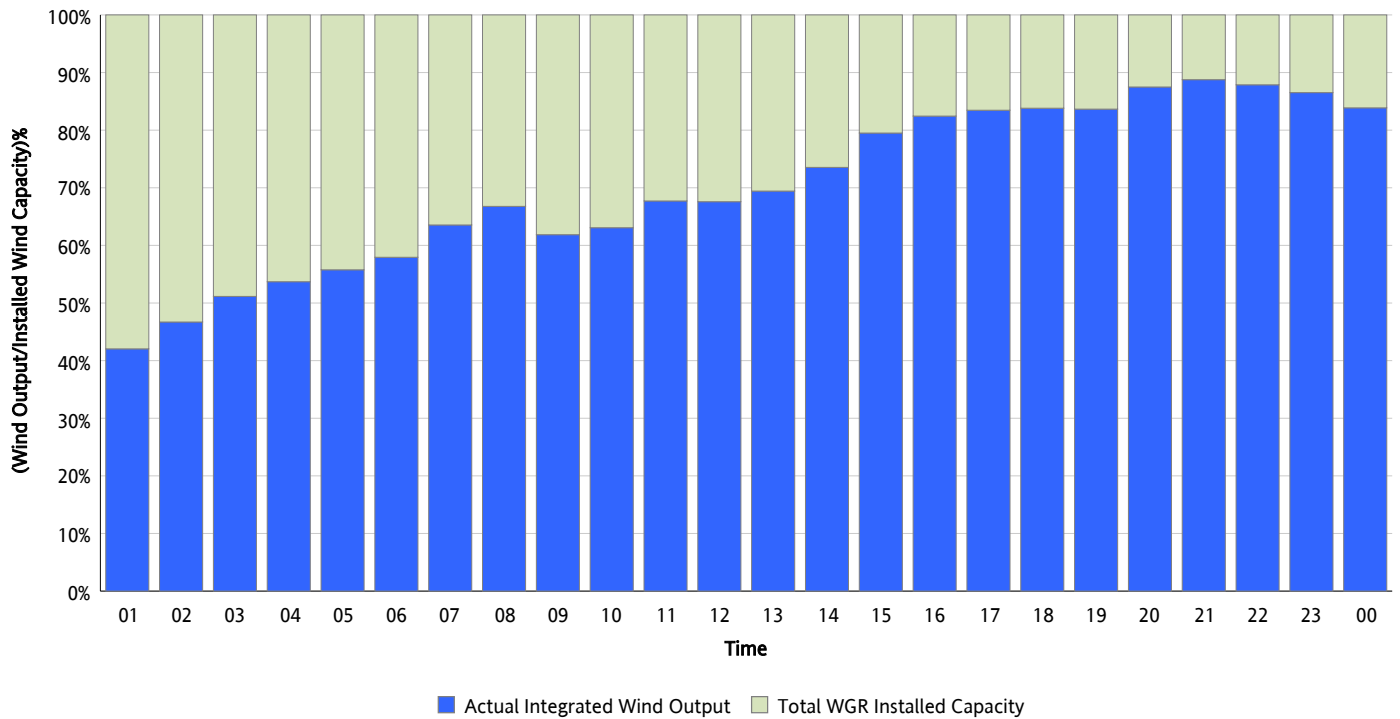
**Hourly Average Actual Load vs. Actual Wind Output**  
03/03/2013



\* Wind Record and Wind Max represent instantaneous values and the rest of the values are integrated over the hour

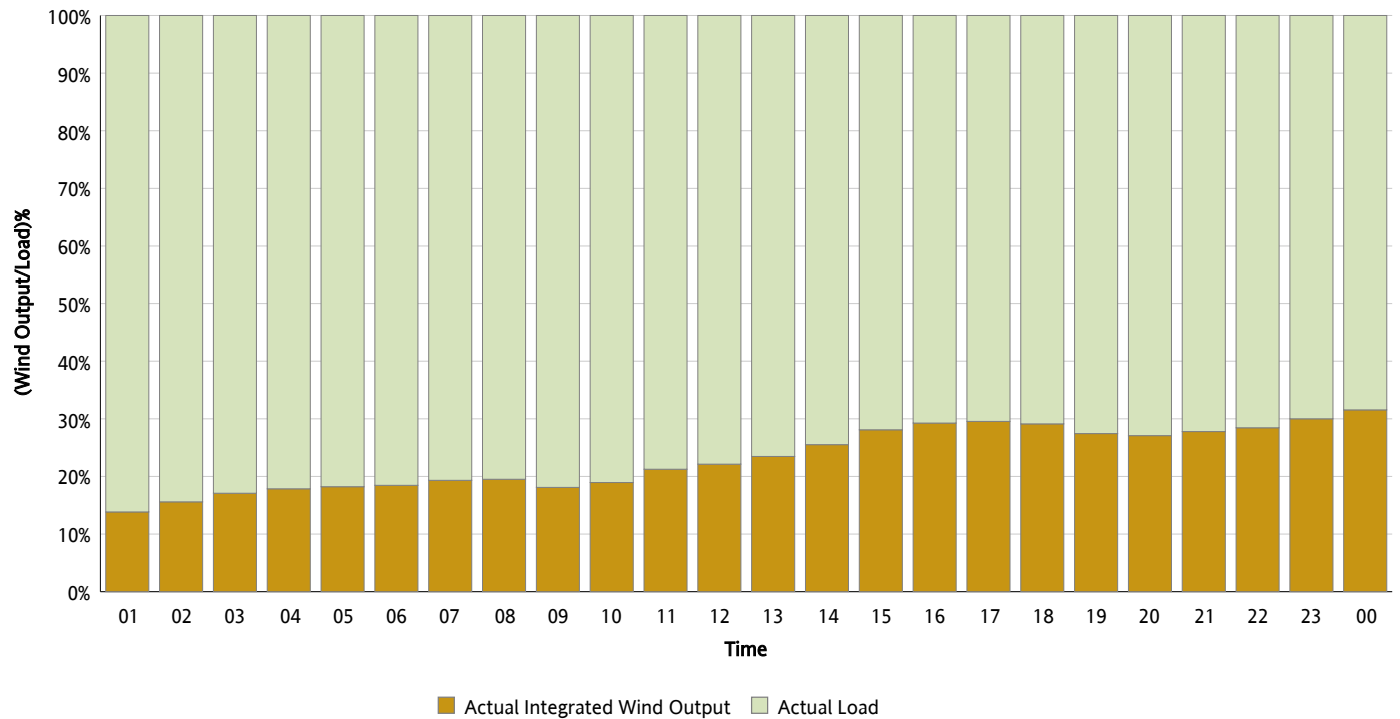
## Actual Wind Output as a Percentage of the Total Installed Wind Capacity

03/03/2013



## Actual Wind Output as a Percentage of the ERCOT Load

03/03/2013



## ERCOT Load vs. Actual Wind Output

02/24/2013 - 03/03/2013

